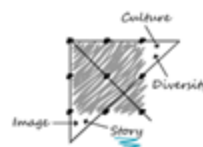




NINE dot ARTS

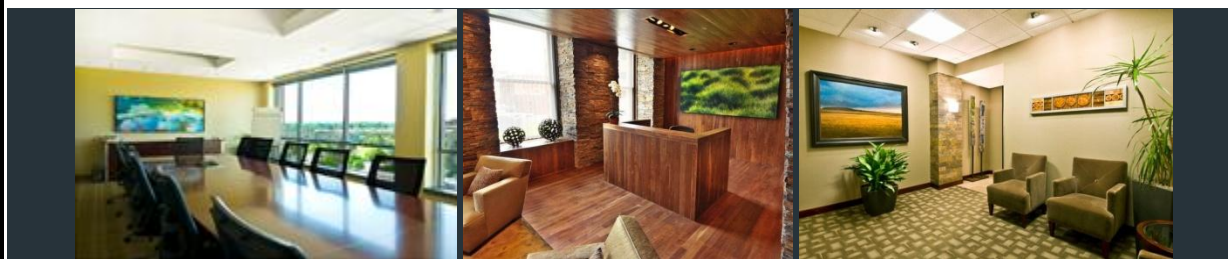
Connect the Dots



Volume 1, July 2011

Greetings!

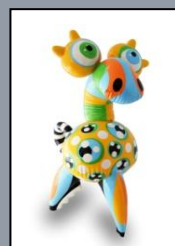
This is the first of our newsletters from the office of Nine Dot Arts, designed to inform you on art basics, news, and happenings.



## Don't Miss

### *Exhibits & Events*

**William Havu Gallery presents *Toy Stories*, an exhibition featuring six artists' thematic usage of toys. *Toy Stories* is showing until September 3rd.**



### **Visit the Cherry Creek Arts Festival, July 2-4**

For three days during the July 4th holiday weekend since 1991, Colorado's signature cultural event is presented in Denver's Cherry Creek North. The festival is a world-class and award-winning celebration of the visual, culinary and performing arts and enjoys an annual attendance of 350,000 visitors.

## In the Field

*Kara Walker at Sikkema Jenkins & Co.  
New York City*

Kara Walker's massive black and white charcoal drawings consumed the Sikkema Jenkins gallery in a recent solo exhibition. At first glance, the figurative images are abstracted and dynamic. After a closer look the grotesque, eerie actions become apparent. Walker references themes of slavery, oppression and abuse in African American history. However, the disturbing subjects are toned down by lack of color. The energetic markings are beautiful in themselves and almost hide the unnerving subjects. Walker's work is powerful and political without being trite; an amazing feat most artists strive for and never achieve. Take any opportunity you have to experience Walker's work firsthand.

*-Molly Scharfenaker, Principal/Art Consultant, Nine Dot Arts*



## ArtSmart

*with Mr. SmARTy Pants*

"Next time you are looking at art, comment how the piece is typical or not typical of the artist's *oeuvre*. It's a fancy French word that means the artist's body of work. For example, lilies and garden scenes are typical in Monet's *oeuvre*."

